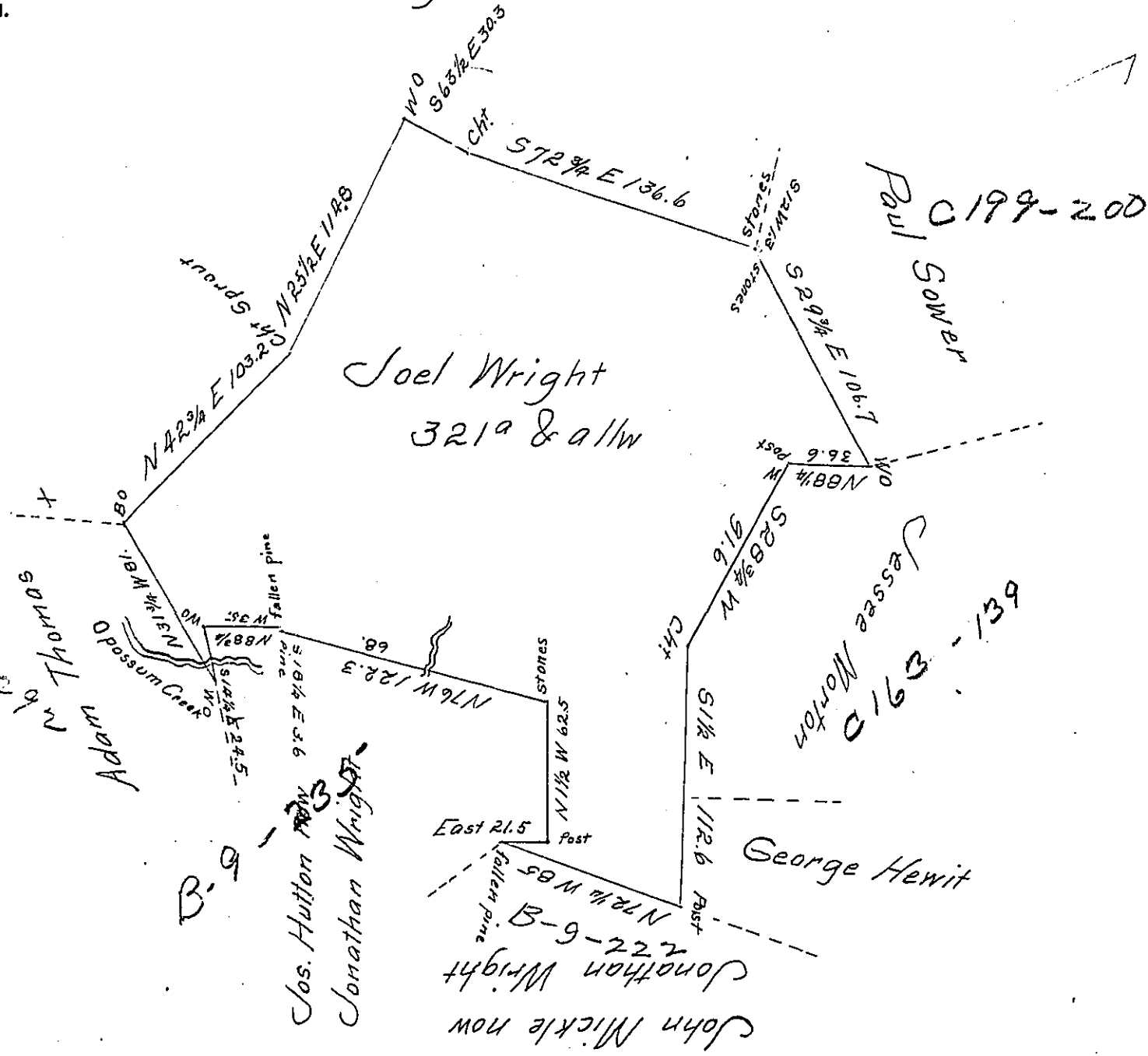


Mich! Ege



Situate in Manallen Township Adams County Surveyed October 16th 1794 by Moses McClean D.S. by Warrant to Joel Wright for 300^a dated April 6th 1790 Resurveyed March 26th 1813 for Jonathan Wright Containing three hundred & twenty one acres & alle.

By Sam! Sloan D.S

To Andrew Porter Esq.
Surveyor General

IN TESTIMONY that the above is a copy of the original remaining on file in the Department of Internal Affairs of Pennsylvania, made conformably to an Act of Assembly approved the 16th day of February, 1833, I have hereunto set my Hand and caused the Seal of said Department to be affixed at Harrisburg, this 25th day of October 1907

Nancy Howell
Secretary of Internal Affairs.